



## 60 Trevore Drive

Standish, Wigan, WN1 2QE

**Price £130,000**



Sapphire Homes are delighted to offer For Sale this spacious and wonderfully presented 2 bedroom second floor apartment on the exclusive Worthington Park development which is perfect for a professional or couple. The location is in a quiet setting that is a short walk from Haigh Hall & the Leeds Liverpool Canal, plus various bus routes & the village of Standish. Furthermore, unlike most apartments, this particular property has its own outdoor garden space which adjoins the communal gardens. In brief the accommodation comprises a welcoming entrance / hallway, a generous lounge with French Doors onto the garden and a modern fitted kitchen, two good sized bedrooms with the master having a Juliet balcony and a modern family bathroom with four piece suite in white with separate shower and bath. The property is warmed by Gas Central Heating and also benefits from a modern tasteful décor and UPVC double glazing throughout. Externally, the communal garden is a grassed area and it also overlooks beautifully maintained gardens which are well screened by mature trees, whilst also enjoying a westerly facing aspect & lots of afternoon sun. Early viewings are essential to appreciate in full.



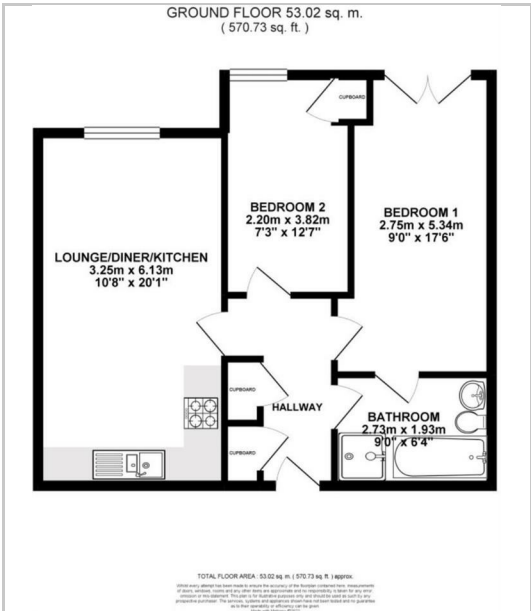
SECOND FLOOR

- Entrance / Hallway
- Lounge / Kitchen / Diner
- Bedroom 1
- Bedroom 2
- Bathroom

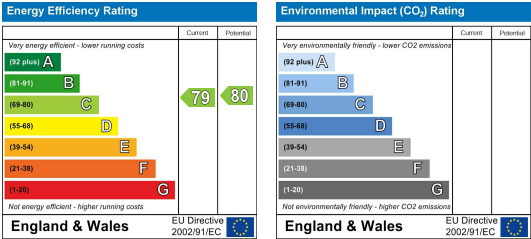
Area Map



Floor Plans



Energy Efficiency Graph



These particulars, whilst believed to be accurate are set out as a general outline only for guidance and do not constitute any part of an offer or contract. Intending purchasers should not rely on the representation of fact, but must satisfy themselves by inspection or otherwise as to their accuracy. No person in this firms employment has the authority to make or give any representation or warranty in relation to the property.

